



## Product Benefits

Fencing profiles can be used to produce bird's mouth fencing and standard fences and screens. The profiles can be cut, screwed, nailed and bolted just like timber but have the following benefits over timber:

Stronger and more durable

Maintenance free

Uniform dimensions

Consistent quality - no knots, splits or shakes

Less flammable

UV and insect resistant

Impervious to water and resistant to algae

Will not crack, chip, split or break

No surface treatment required

## Innovative recycling technology

The TDP Recycled Products Range is produced entirely from mixed waste plastics that would have been destined for landfill

100% recycled

100% recyclable

Each tonne used saves 1.66 tonnes of CO<sub>2</sub>



## Specification

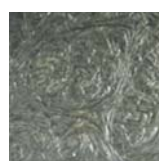
Description	Made using 100% high quality recycled mixed waste plastic from post industrial and consumer use and where necessary selected process additives.	
Composition	Fencing profiles are composed of a proportion of LDPE (Low Density Polyethylene), HDPE (High Density Polyethylene), PP (Polypropylene) and other thermoplastic materials.	
Production process	The polymers are ground, mixed and fused under high temperatures and pressures into pressed moulds.	
Finish	The surface is knot free, evenly coloured and shows a textured structure.	
Properties	<ul style="list-style-type: none"> <li>Maintenance free</li> <li>Durable</li> <li>Frost proof</li> <li>Does not leach toxic substances</li> <li>UV resistant</li> </ul>	<ul style="list-style-type: none"> <li>Wear resistant</li> <li>Non-rotting</li> <li>Environmentally friendly</li> <li>100% recycled and recyclable</li> <li>Shock proof and flexible</li> </ul>

Performance	Property	value	
All figures quoted are averages and should be checked for specific applications	Density	0.924 – 0.966 Kg/dm <sup>3</sup>	
	Linear expansion coefficient	0.068 – 0.075 mm/m/ °C	
	Moisture absorption	<0.46%	
	Vicat temperature	~107 °C	
	Pull out value	3095 N	
	E-module	500 – 570 MPA	
	Breaking strength	15.5 – 17.9 MPA	
	Elongation at break	3.7 – 14.9%	
	Maximum pull strength	15.5 – 17.8 MPA	
	Elongation at maximum pull strength	3.5 – 4.8%	
	Impact resistance:	average	12.5 – 17.8 Kg/m <sup>2</sup>
		average	0.48 – 0.7 J
	Bend test:	e-module	550 MPA
Max. press force		22.2 MPA	
Bend at max. press force		7.5%	
Chemical stability	Resistant to most common chemicals - contact us for specific information		

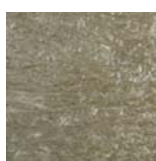
Ref: 22636 Date: 08.11

<b>Dimensions: Bird's Mouth Fencing</b>	140 x 100mm post
	100 x 100mm post
	100 x 100mm top rail

With these components it is possible to construct a fence with a height of 600, 900 or 1500mm.



Black



Mid-brown



4765



For more information or to order please contact: TDP Limited, Derby Road, Wirksworth, Derbyshire DE4 4BG  
 Tel: 01629 820011 Fax: 01629 820022 email: info@tdpltd.com Website: www.tdpltd.com